



Verify Against the Common Assessment Standard

Simplify pre-tender compliance and make confident, defensible supplier decisions – all in one platform.

The dashboard provides a comprehensive overview of the supply chain. Key metrics include:

- Verified Supply Chain:** 199 (View)
- Expired Supply Chain:** 46 (View)
- My Supply Chain:** 245 (View)
- Subcontractors:** 110 (View)
- Suppliers:** 72 (View)
- Consultants:** 63 (View)
- Due To Expire:** 31 (View)
- Expired Supply Chain (Secondary):** 15 (View)
- Alerts:** 13 (View)

Top 10 Performing Suppliers

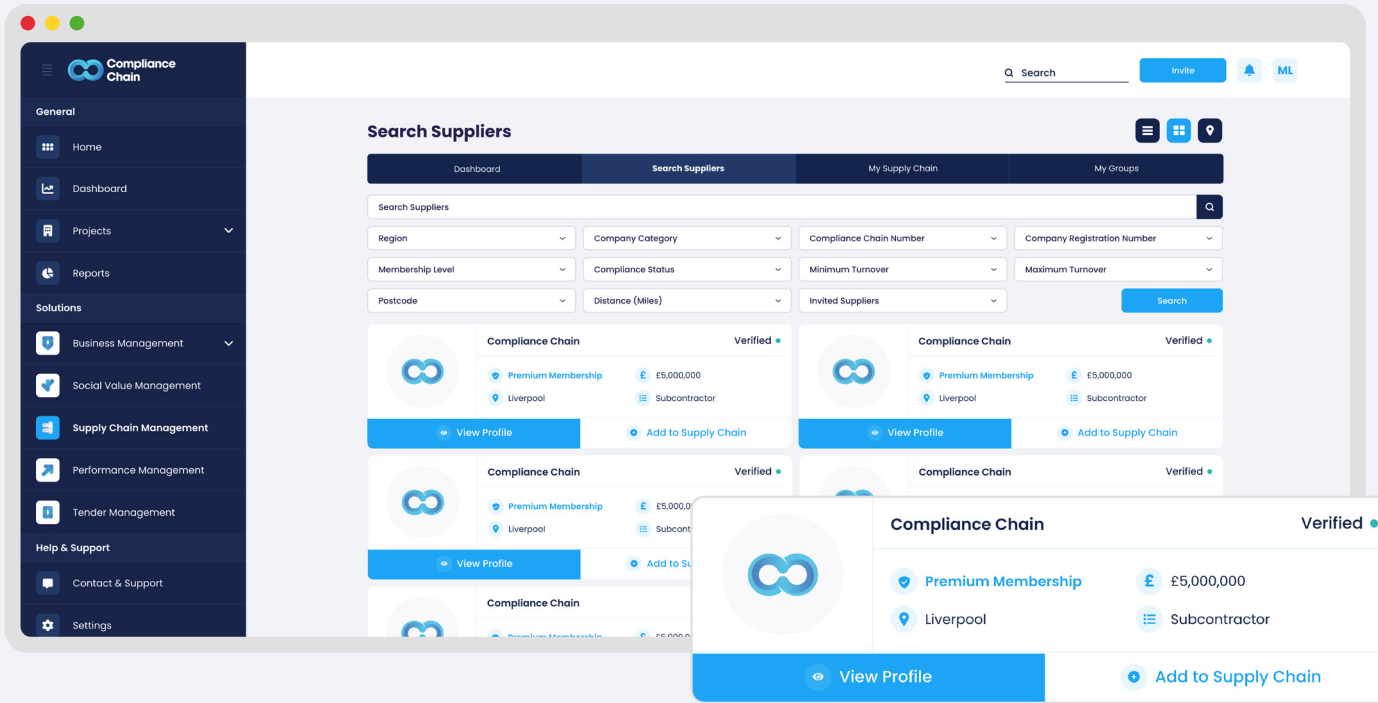
Supplier Name	Status	Overall Rating	Profile
1. Compliance Chain	Verified	89/100	Profile
2. Compliance Chain	Verified	88/100	Profile
3. Compliance Chain	Verified	87/100	Profile
4. Compliance Chain	Verified	85/100	Profile

The dashboard also features a map of the region, showing locations like Liverpool, Manchester, and Warrington.

Confident Procurement. Compliant Suppliers.

See all supplier compliance in one place – with real-time insight into certifications and evidence you can trust.

Swap between list, card or map view



Supplier Search

Find the right suppliers, faster.



Search by trade,
location or distance



Filter by membership level
and compliance status



Map, card or list view
for quick scanning



Add to your tender
list in one click

CAS Check

Verify compliance for tenders.



Instantly view certification status for SSIP, Common Assessment Standard and more

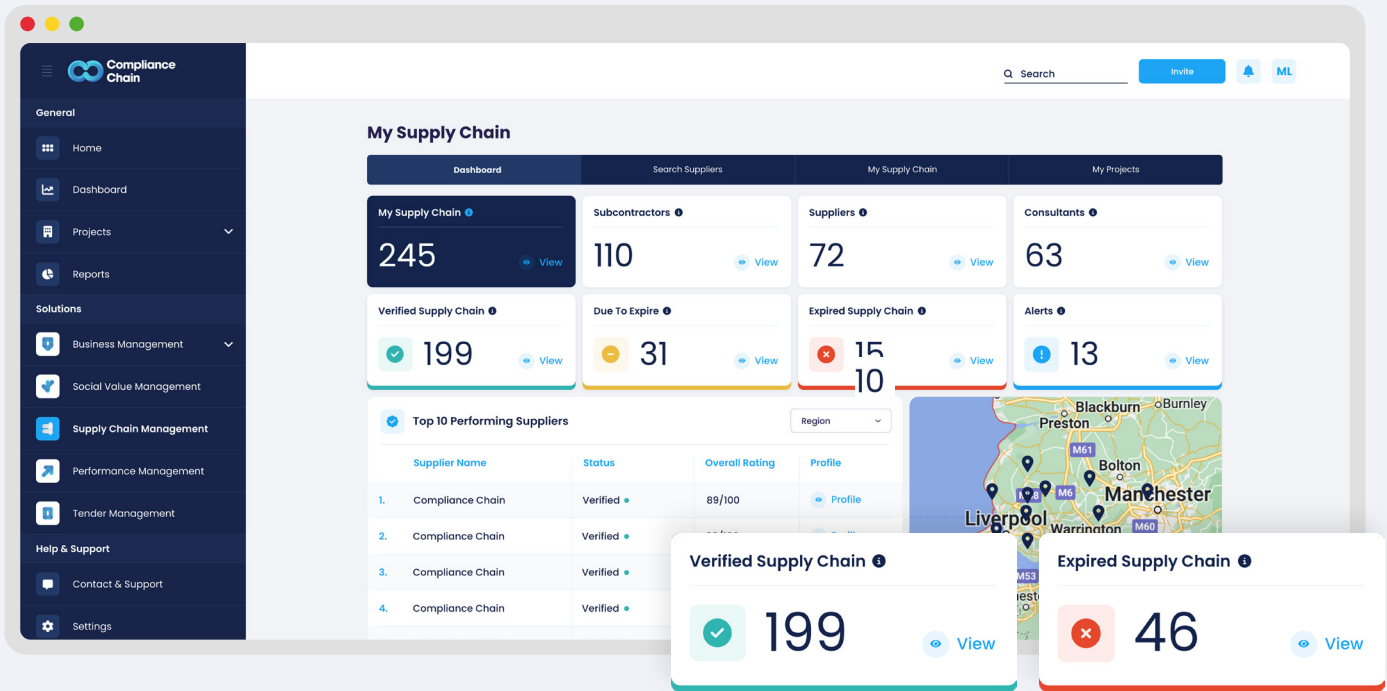


Check expiry dates & live verification details



Effortless pre-qualification from a Recognised Assessment Body

The screenshot shows the Compliance Chain dashboard interface. On the left is a dark blue sidebar with navigation options: Home, Dashboard, Projects, Reports, Solutions, Business Management, Social Value Management, Supply Chain Management, Performance Management, Help & Support, Contact & Support, and Settings. The main content area features a header with the Compliance Chain logo and user details: Status: Active, Membership Level: Premium, Membership Expiry: 11/12/26, and Compliance Chain Number: CC1234. Below the header is a grid of 12 cards. The top row includes: Active Certifications (4/5), Assessment Expiry Date (16 Days, Expiry: 11/12/26), Questions Due to Expire (1), and Questions Rejected (2). The middle row includes: Compliance Chain Core, Compliance Chain CAS, Identity (100% Completed), Financial Information (100% Completed), and C & P Standing (100% Completed). The bottom row includes: Compliance Chain SSIP, Compliance Chain Social Value, Health & Safety (100% Completed), Environmental (100% Completed), and Quality Management (100% Completed). Each card has a 'View' link. Above the dashboard, the SSIP and Common Assessment Standard logos are displayed in white boxes with blue borders.



Compliance Dashboards

Bring it all together.



Quick view of
supplier profiles



Add key suppliers to
your list for tender



Monitor compliance
across all projects



Customise your own
supplier groups



**Compliance
Chain**

Intelligent Software Solutions.

Powering progress across
the built environment sector.

Get in touch to find out more



www.compliancechain.com



0333 577 7575



info@compliancechain.com



Compliance Chain



**Scan the QR code
to find out more**