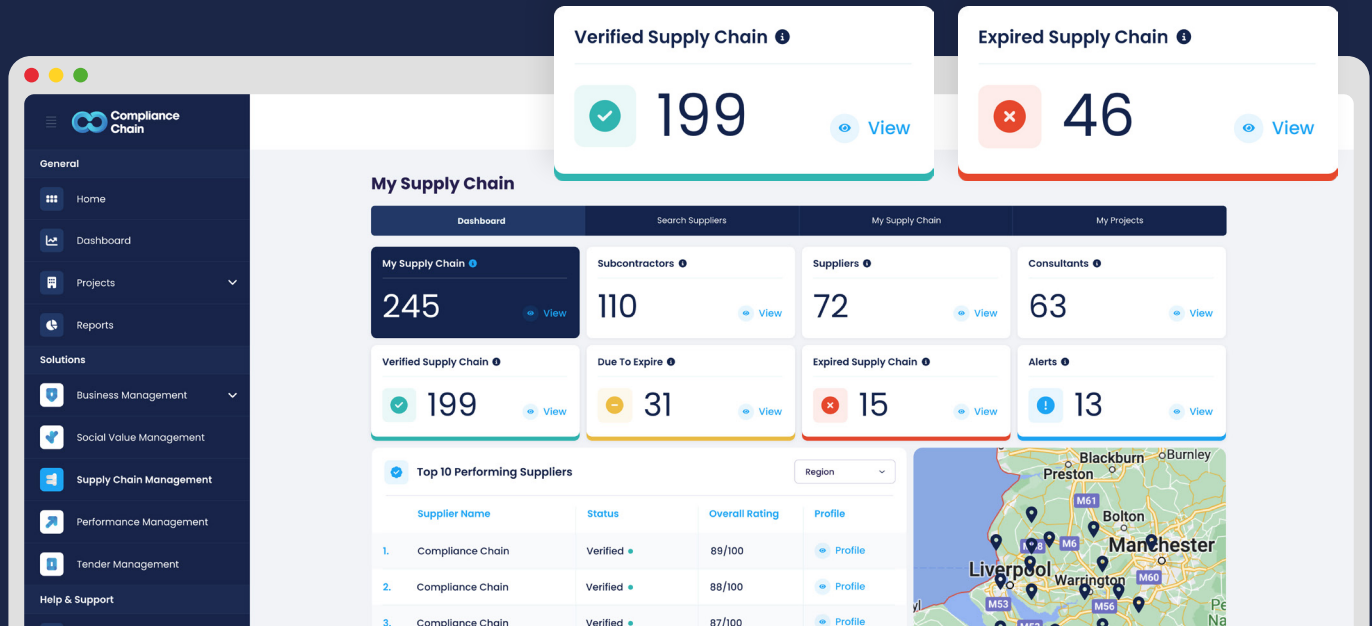




# Build a Better Supply Chain

Find, assess and manage trusted suppliers  
with our Supply Chain Management solution.



The dashboard provides a comprehensive overview of the supply chain. It features a sidebar with navigation options: General (Home, Dashboard, Projects, Reports), Solutions (Business Management, Social Value Management, Supply Chain Management, Performance Management, Tender Management), and Help & Support.

Key metrics are displayed in summary cards:

- Verified Supply Chain:** 199 (View)
- Expired Supply Chain:** 46 (View)
- My Supply Chain:** 245 (View)
- Subcontractors:** 110 (View)
- Suppliers:** 72 (View)
- Consultants:** 63 (View)
- Due To Expire:** 31 (View)
- Expired Supply Chain:** 15 (View)
- Alerts:** 13 (View)

The **Top 10 Performing Suppliers** table is as follows:

Supplier Name	Status	Overall Rating	Profile
1. Compliance Chain	Verified	89/100	<a href="#">Profile</a>
2. Compliance Chain	Verified	88/100	<a href="#">Profile</a>
3. Compliance Chain	Verified	87/100	<a href="#">Profile</a>

A map of the region around Manchester and Liverpool is shown, with various locations marked by pins.

# Confident Decisions. Compliant Supply Chains.

See your full supply chain in one place – with real-time insight into certifications, finances, and performance.

The image displays three overlapping screenshots of the Compliance Chain software interface, illustrating its capabilities in managing supply chain compliance and performance.

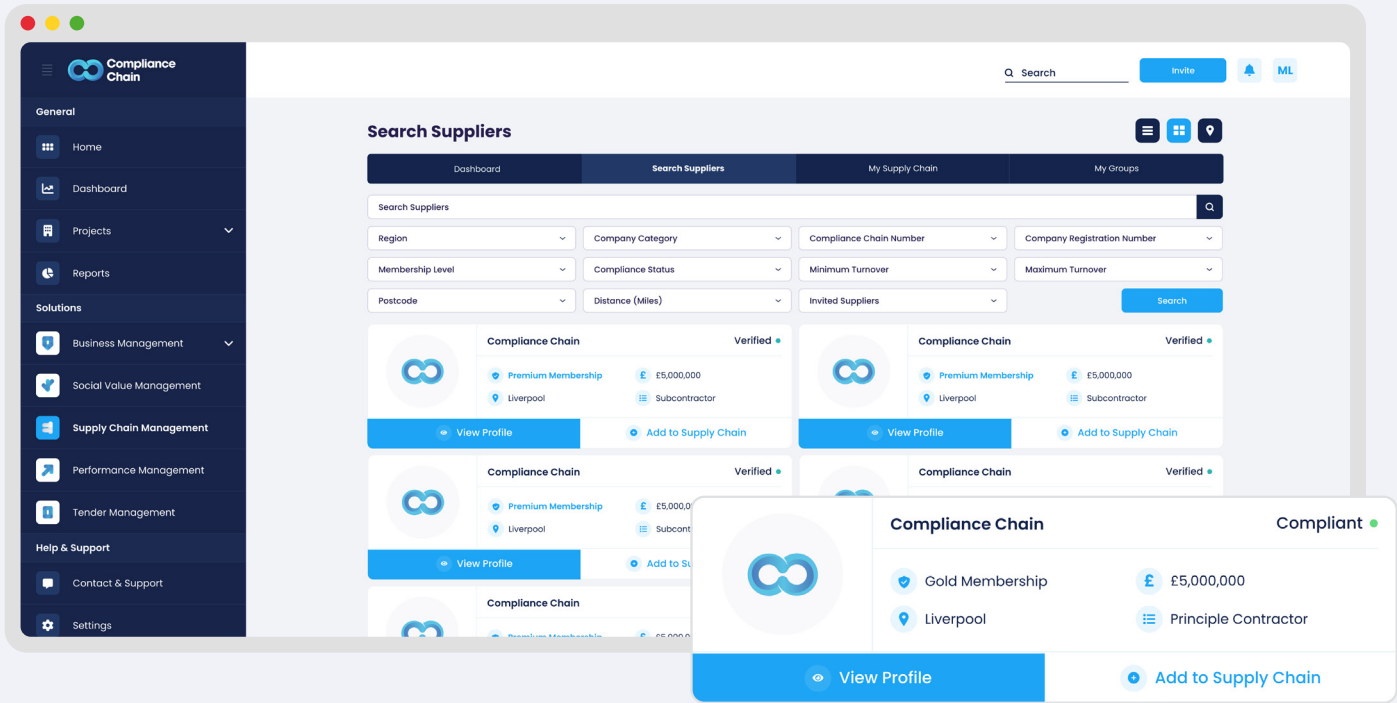
**Top Left Screenshot:** Shows the main dashboard with a **Risk Score** of 75/100 (Fair) and a **Status** of Active. The interface includes a search bar, navigation menu, and user profile information.

**Top Right Screenshot:** Displays the **Performance Areas** section, showing a score of 8 out of 10 for the **Health & Safety** area. The chart includes a legend and a scale from 1 to 10.

**Bottom Screenshot:** Provides a detailed view of the **Compliance** section, featuring several key metrics and status indicators:

- Active Certifications:** 4/5
- Assessment Expiry Date:** 16 Days (Expires: 11/12/26)
- Questions Due to Expire:** 1
- Questions Rejected:** 2
- Identity:** 100% Completed
- Financial Information:** 100% Completed
- C & P Standing:** 100% Completed
- Health & Safety:** 100% Completed
- Environmental:** 100% Completed
- Quality Management:** 100% Completed

The interface also includes a sidebar with navigation options like Home, Dashboard, Projects, Reports, and Solutions, and a search bar at the top.



# Supplier Search

Find the right suppliers, faster.



Search by trade,  
location or distance



Filter by membership level,  
turnover and compliance status



Map, card or list view  
for quick scanning



Add to supply  
chain in one click

# Certification Tracking

Stay on top of supplier compliance.



Instantly view certification status for SSIP, Common Assessment Standard & more



Supplier assessments & updates, without the admin time



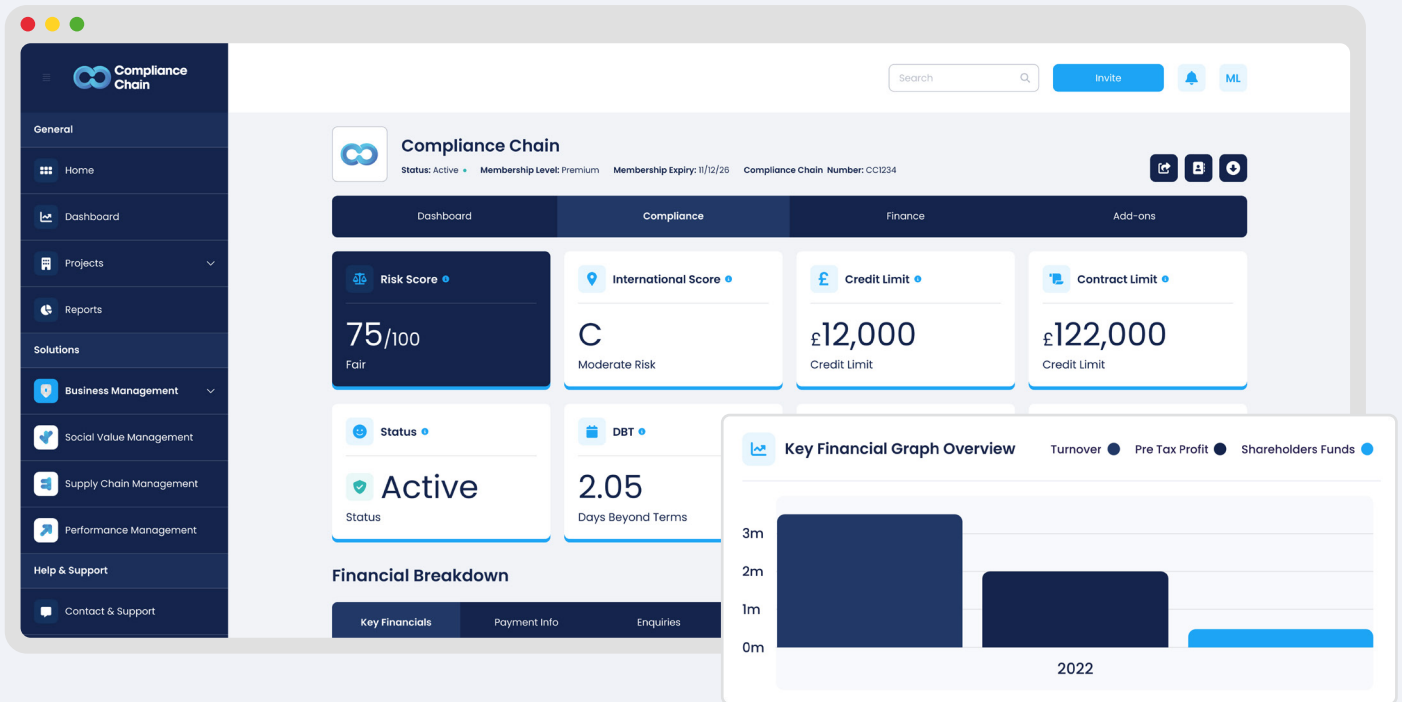
Live visibility of supplier's status



Effortless pre-qualification from a Recognised Assessment Body



The screenshot shows the Compliance Chain dashboard interface. On the left is a dark blue sidebar with navigation options: Home, Dashboard, Projects, Reports, Solutions, Business Management, Social Value Management, Supply Chain Management, Performance Management, Help & Support, Contact & Support, and Settings. The main content area has a header with the Compliance Chain logo and status: Active, Membership Level: Premium, Membership Expiry: 11/12/26, and Compliance Chain Number: CC1234. Below the header is a grid of widgets. The top row includes: Active Certifications (4/5), Assessment Expiry Date (16 Days, Expiry: 11/12/26), Questions Due to Expire (1), and Questions Rejected (2). The middle row shows: Compliance Chain Core, CAS, SSIP (100% Completed), and C & P Standing (100% Completed). The bottom row shows: Compliance Chain Social Value, Health & Safety (100% Completed), Environmental (100% Completed), and Quality Management (100% Completed). Each widget has a 'View' link. Above the dashboard, the SSIP and Common Assessment Standard logos are displayed in separate boxes.



# Financial Checks

De-risk your projects with live financial insight.



View credit scores, profit & loss, unpaid accounts and more



Instant risk reviews for all suppliers



Financial alerts for your supply chain partners



Integrated with Creditsafe for real-time updates

# Supplier Performance

Track who's delivering – and who's not.



Score suppliers using industry-standard KPIs



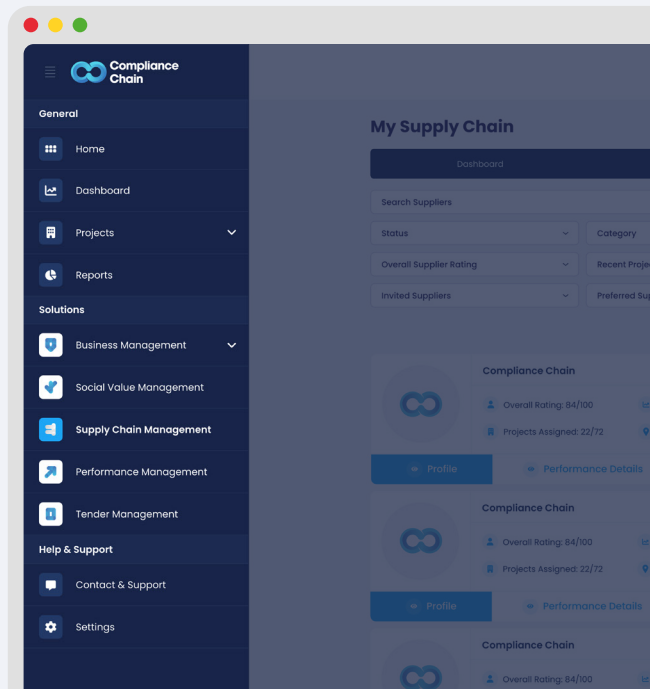
Use past performance to shape future decisions



View quality, timeliness, and standards



View all projects the supplier is assigned to

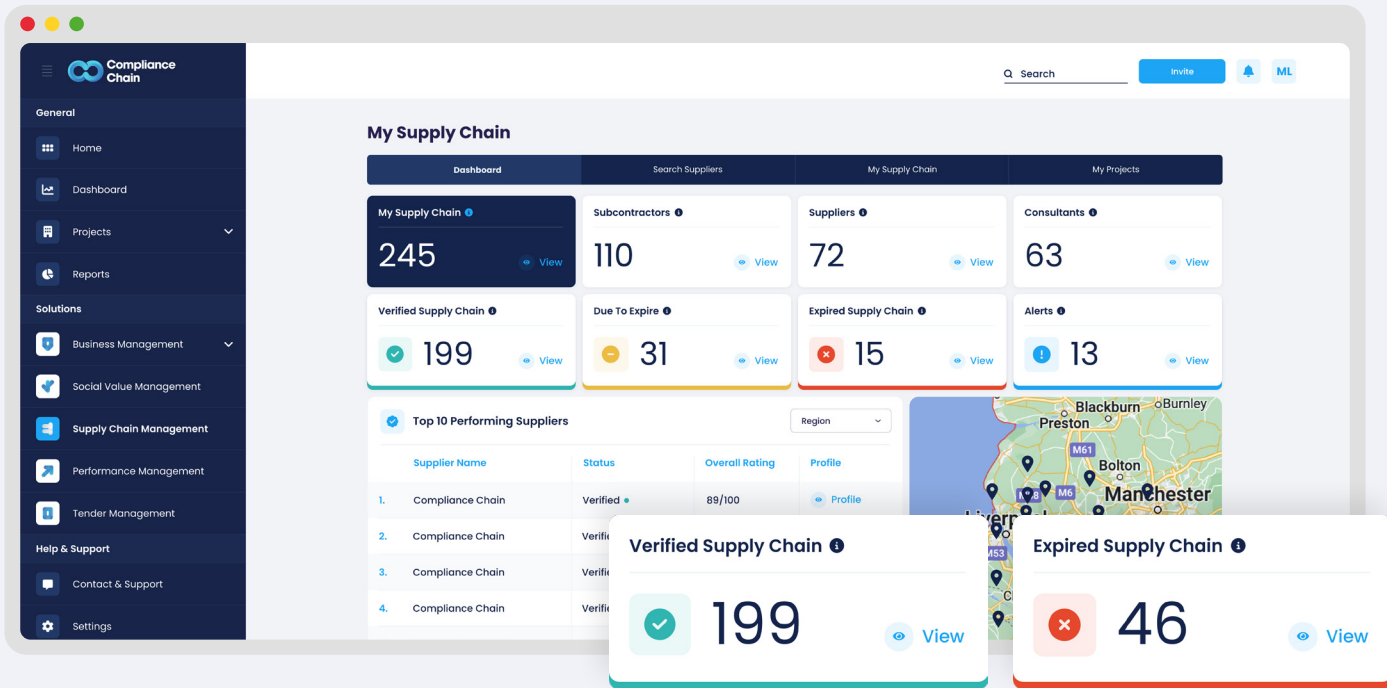


### Compliance Chain

Verified

Performance | Projects

Performance Areas (1-Poor 10-Excellent)	Total
<p><b>Health &amp; Safety</b></p> <p>How would you rate the subcontractor's adherence to safety protocols and their commitment to maintaining a safe working environment?</p> <p>1 2 3 4 5 6 7 8 9 10</p>	
<p><b>Programme</b></p> <p>How would you rate the subcontractor's ability to meet project deadlines and deliver work according to the agreed programme?</p> <p>1 2 3 4 5 6 7 8 9 10</p>	
<p><b>Quality</b></p> <p>How would you rate the quality of work delivered by the subcontractor?</p> <p>1 2 3 4 5 6 7 8 9 10</p>	
<p><b>Resourcing</b></p> <p>How would you rate the subcontractor's ability to manage resources, including manpower, equipment, and materials?</p> <p>1 2 3 4 5 6 7 8 9 10</p>	



# Overview Dashboards

Bring it all together.



Quick view of supplier profiles



Add key suppliers to your 'Preferred' list



Monitor compliance across all projects



Review the rating and ranking of top performing suppliers



# Intelligent Software Solutions.

Powering progress across  
the built environment sector.

Get in touch to find out more



[www.compliancechain.com](http://www.compliancechain.com)



0333 049 6966



[info@compliancechain.com](mailto:info@compliancechain.com)



Compliance Chain



Scan the QR code  
to find out more